

# **Chillicothe Sportsmen's Club NOVEMBER 2022 Newsletter**

**WEB PAGE** <http://www.chillisportsmen.org/>

**Chillicothe Sportsmen's Club, Inc.**

**PO Box 13, Chillicothe, IL. 61523-0013**

**Webmaster Tim Vik - [webmaster@chillisportsmen.org](mailto:webmaster@chillisportsmen.org)**

## **CONTACTS**

If you have any questions or concerns about your Club you may contact any Club Officer listed below or any board member.

<b>President</b>	<b>V-President</b>	<b>Secretary</b>	<b>Treasurer</b>
Jeff Payne (309)264-2276	Steve Risinger (309)449-6268	Tim Vik (309)258-4809	Bob Griffith (309) 274-2068

---

## **HAVE A SAFE AND HAPPY THANKSGIVING!**

### **INFORMATION & NOTICES:**

**Remember SAFETY is the primary importance at all times on all ranges.** A reminder to everyone that anyone found violating Club Range Rules could be suspended or lose their membership.

### **ANNOUNCEMENTS**

#### **ANNUAL MEETING & ELECTIONS:**

Remember Tuesday November 9<sup>th</sup> is the ANNUAL MEETING & ELECTION NIGHT. All four Officers are up for election / re-election. To be an officer you must be an Associate Life or Life member and your term is one year. Five Directors are also up for election / re-election. Directors are Life, Associate Life and Annual Members

#### **EVENT DIRECTORS:**

Please send your 2023 event dates to Deb Park at [1911lady@chillisportsmen.org](mailto:1911lady@chillisportsmen.org). The 2023 Calendar will be presented to the board in December for approval. If your dates are not on the calendar for board approval. You will have to go the board for permission for your event.

#### **Membership Renewal Time Is Here**

Our annual membership meeting was on November 8, so we have begun membership renewals for 2023. You can renew in person at the Gun Show on December 3 and 4, and also at the December 13 and January 10 board meetings. If you can't renew at one of those times, then please mail

your membership card with any work hours signed off and a check for what you owe to:

**Chillicothe Sportsmen's Club**  
**Attn: Bob Griffith**  
**P.O. Box 13**  
**Chillicothe, IL 61523**

Do not mail in your key. First, you may want to use it. It is still good until January 1. Second, it may damage mail sorting equipment if you don't use the proper envelop (and the Post Office may charge for the repairs).

Don't forget that all memberships expire on December 31, and the locks get changed early morning on January 1. You have until February 1, 2023 to renew your membership, but if you think you might want to shoot in January, you might want to get your renewal in by the end of the year.

If annual members have not renewed by February 1, 2023, you will have to apply again and start over as a new member. You will still owe for work hours not completed in 2022.

### **How much do you owe?**

Annual members will owe \$100 for dues, plus \$25 for the land fund and \$15/hour for each of the required 10 work hours you have not completed. Sorry, no extra credit for work hours beyond the 10 required. Associate Life members of any age and Life members under the age of 65 will owe \$25 for the land fund and \$15/hour for each of the required 10 work hours you have not completed. Life members age 65 and over owe \$25 for the land fund.

We accept cash, personal checks, bank checks or money orders. We do not accept credit or debit cards, bit coin or any forms of electronic payment. Checks are recommended if you are mailing in your payment. Mailing cash is at the member's risk, we are not responsible if it is lost in the mail.

I would appreciate it if they would not staple payment and card together. The first thing I have to do is separate them and this just adds time to the process and is annoying.

If you have any questions, send me (Bob Griffith) an e-mail at [griffrc@mchsi.com](mailto:griffrc@mchsi.com) or you can call me at 309-274-2068 or 309-208-3144.

### **WINTER GUN SHOW**

Don't forget the Winter Gun Show December 3rd and 4th. Come out and support your club and find your deals on Ammo and other goodies.

### **YSSI**

YSSI is scheduled for April 21-22. We are in need of a Director for this event. If you are willing to take on this event please contact

Bob Griffith at 309-274-2068 or any board officer or Director.

Want to become a Club Director? We are in need of a Building & Clubhouse Director, Marshal-Putman 4H Director, Director for New Membership, Director for New Membership Orientation and a Lead for the Indoor Range Cleanup. Training will be provided. If interested contact Bob Griffith at 309-274-2068 or any board officer or Director.

### **Ground Maintenance**

The club is in need of a volunteer(s) for ground maintenance. If interested please contact Kevin Bauswell @ (309) 678-2438. **Work Hours will be awarded.**

### **OUTDOOR WORK PARTY**

Saturday November 12th - 8AM. If you are participating in the outdoor work party, the following tools are helpful to bring: Saws, chainsaws, weed-trimmers, pole-saws, tree loppers, gloves, trucks and trailers. Be sure to dress appropriately and wear gloves. Questions - contact Kevin Bauswell @ (309) 678-2438.

### **INDOOR RANGE WORK PARTY:**

Saturday, November 12th - 8AM. Cleaning the Range Floor, Shooting Stations, Storeroom & Gun Vault Floor, Furnace Filters, ETC.

### **CLUBHOUSE WORK PARTY:**

Saturday, November 12<sup>th</sup> - 8AM Work will include cleaning the Main Hall, Entrance Area, Restrooms, Windows, Kitchen, etc.

### **NEWSLETTER ARTICLES**

If anyone has anything they would like to share in the newsletter, please contact Deb Park at Phone # 309-369-6238 or email to 1911lady@chillisportsmen.org.

### **Membership**

We are **not** at our full capacity for membership. Spread the word that we are taking applications for 2023.

There are also openings for life member and associate life member. If you or anyone you know would like to move up from annual to associate life or associate life to Life, please contact a board member. Requirements are listed in the bylaws

### **MAILED COPY OF NEWSLETTER:**

If you receive this mailed copy of the newsletter and are on the e-mail list, you are receiving this newsletter, and possibly future newsletters, because the Club needs 200+ copies mailed out each month to meet Postal Bulk Rate Discount requirements. First Class mailings will still cost more than adding bulk rate copies to meet the 200+ requirement

## AFFILIATIONS

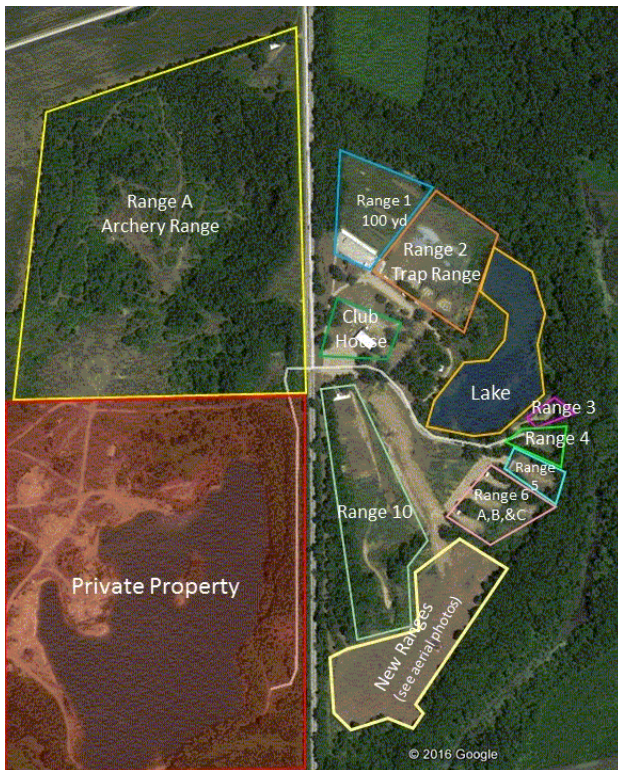
### Your club is affiliated with the following organizations:

NRA	<u>N</u> ational <u>R</u> ifle <u>A</u> ssociation	Affiliation Number #R0570
ISRA	<u>I</u> llinois <u>S</u> tate <u>R</u> ifle <u>A</u> ssociation	Affiliation Number #00282
CMP	<u>C</u> ivilian <u>M</u> arksmanship <u>P</u> rogram	Affiliation Number #5208
USPSA	<u>U</u> nited <u>S</u> tates <u>P</u> ractical <u>S</u> hooting <u>A</u> ssociation	Affiliation Number IL-08
SASS	<u>S</u> ingle <u>A</u> ction <u>S</u> hooting <u>S</u> ociety	

## RANGE NUMBERS

The following are the range numbers:

<u>RANGE</u>	<u>LOCATION</u>
1 --	100 Yard Range
2 --	Trap range
3 --	Short lakeside range (just north of Cowboy Town)
4 --	Cowboy Town
5 --	Practice Range
6 --	3 – bays (A, B, C)
7 --	New 100 yard range (Not useable yet)
8 --	6 – bays (A, B, C, D, E, F)
9 --	Reserved for future use
10 --	300 Yard Range (old range 7)
A --	Archery Range





## Chillicothe Sportsmen's Club Calendar of Activities

# November

<i>Sun</i>	<i>Mon</i>	<i>Tue</i>	<i>Wed</i>	<i>Thu</i>	<i>Fri</i>	<i>Sat</i>
		<b>1</b> Indr Pistol Pract—1 PM Indr WTSP—6 PM	<b>2</b> Indr Smallbore—11AM	<b>3</b> Indr Pistol Pract—1 PM Indr—MP-4H—5 PM	<b>4</b> Indr Pistol Pract—6 PM	<b>5</b> Indr Smallbore—8 AM
<b>6</b> <u><i>D S T Ends</i></u> 2-Open Trap-*Weather Permitting-10 AM 2—MZL Shtgun-9 AM Indr Bowling Pin-1 PM	<b>7</b> Indr Smallbore—5 PM	<b>8</b> <u><i>Election Day</i></u> Indr Pistol Pract—1 PM  <u><i>Board Meeting 6:30PM</i></u>	<b>9</b> Indr Smallbore—11AM	<b>10</b> Indr Pistol Pract—1 PM Indr Bulls-eye—6 PM	<b>11</b> <u><i>Veteran's Day</i></u> Indr Pistol Pract—6 PM	<b>12</b> Indr Smallbore—8 AM Outdr Work Party-8 AM Indr & CH Clean-9 AM  1-Mauser Match—9 AM
<b>13</b>  <b>Newsletter Article Sub Deadline—4 PM</b>	<b>14</b> Indr Smallbore—5 PM	<b>15</b> Indr Pistol Pract—1 PM Indr WTSP—6 PM	<b>16</b> Indr Smallbore—11AM	<b>17</b> Indr Pistol Pract—1 PM Indr—MP-4H—5 PM Indr Bulls-eye—7 PM	<b>18</b> Indr Pistol Pract—6 PM	<b>19</b> Indr Smallbore—8 AM 3-6C – USPSA 9AM Weather Permitting
<b>20</b> 2-Open Trap-*Weather Permitting-10 AM 3-6C – USPSA –9AM Weather Permitting Indoor USPSA 9AM	<b>21</b> Indr Smallbore—5 PM	<b>22</b> Indr Pistol Pract—1 PM	<b>23</b> Indr Smallbore—11AM	<b>24</b> <u><i>Thanksgiving</i></u>	<b>25</b> Indr Pistol Pract—6 PM	<b>26</b> Indr Smallbore—8 AM 1—NRL22—8 AM
<b>27</b>	<b>28</b> Indr Smallbore—5 PM	<b>29</b> Indr Pistol Pract—1 PM	<b>30</b> Indr Smallbore—11AM			

Note that the number in front of the event indicates the range that the activity is taking place at.

Last Updated: 10/22/2022

# 2022

## Chillicothe Sportsmen's Club Calendar of Activities

# December

<i>Sun</i>	<i>Mon</i>	<i>Tue</i>	<i>Wed</i>	<i>Thu</i>	<i>Fri</i>	<i>Sat</i>
				<b>1</b> CH-Winter Gun Show Setup—9:30 AM  Indr Pistol Pract—1 PM Indr—MP-4H—5 PM	<b>2</b> CH-Winter Gun Show Setup—9:30 AM	<b>3</b> CH-Winter Gun Show— 8:30 AM—4 PM
<b>4</b> 2-Open Trap-*Weather Permitting-10 AM CH-Winter Gun Show- 8:30 AM—3 PM CH-Winter Gun Show Cleanup—3 PM	<b>5</b> Indr Smallbore—5 PM	<b>6</b> Indr Pistol Pract—1 PM Indr WTSP—6 PM	<b>7</b> <i>Pearl Harbor Day</i>  Indr Smallbore—11 AM	<b>8</b> Indr Pistol Pract—1 PM Indr Bulls-eye—6 PM	<b>9</b> Indr Pistol Pract—6 PM	<b>10</b> Indr Smallbore—8 AM Outdr Work Party-8 AM Indr & CH Clean-9 AM  1-Mauser Match—9 AM
<b>11</b> Indr Bowling Pin-1 PM	<b>12</b> Indr Smallbore—5 PM	<b>13</b> Indr Pistol Pract—1 PM  <i>Board Meeting 6:30PM</i>	<b>14</b> Indr Smallbore—11 AM	<b>15</b> Indr Pistol Pract—1 PM Indr—MP-4H—5 PM	<b>16</b> Indr Pistol Pract—6 PM	<b>17</b> Indr Smallbore—8 AM 10—NRL22—8 AM
<b>18</b> 2-Open Trap-*Weather Permitting-10 AM Indr USPSA—9 AM  Newsletter Article Sub Deadline—4 PM	<b>19</b> Indr Smallbore—5 PM	<b>20</b> Indr Pistol Pract—1 PM Indr WTSP—6 PM	<b>21</b> Indr Smallbore—11 AM	<b>22</b> Indr Pistol Pract—1 PM Indr Bulls-eye—6 PM	<b>23</b> Indr Pistol Pract—6 PM	<b>24</b> <i>Christmas Eve</i>  Indr Smallbore—8 AM
<b>25</b> <i>Christmas</i>	<b>26</b> Indr Smallbore—5 PM	<b>27</b> Indr Pistol Pract—1 PM	<b>28</b> Indr Smallbore—11 AM	<b>29</b> Indr Pistol Pract—1 PM Indr—MP-4H—5 PM	<b>30</b> Indr Pistol Pract—6 PM	<b>31</b> <i>New Year's Eve</i>  Indr Smallbore—8 AM

Note that the number in front of the event indicates the range that the activity is taking place at.

Last Updated: 10/22/2022

# 2022