

# Chillicothe Sportsmen's Club September 2021 Newsletter

WEB PAGE <http://www.chillisportsmen.org/>

Chillicothe Sportsmen's Club, Inc.

PO Box 13, Chillicothe, IL. 61523-0013

Webmaster Tim Vik - [webmaster@chillisportsmen.org](mailto:webmaster@chillisportsmen.org)

## CONTACTS

If you have any questions or concerns about your Club you may contact any Club Officer listed below or any board member.

<b>President</b>	<b>V-President</b>	<b>Secretary</b>	<b>Treasurer</b>
Jeff Payne (309)264-2276	Steve Risinger (309)449-6268	Tim Vik (309)258-4809	Bob Griffith (309) 274-2068

---

## INFORMATION & NOTICES:

### HUNTER EDUCATION CLASS:

With the lifting of most of the covid-19 restrictions, Hunter Ed Classes are planned for October 7 - 9. Times are:

Thursday, October 7, 6:00 PM to 9:30 PM

Friday, October 8, 6:00 PM to 9:30 PM

Saturday, October 9, 8:00 AM to 2:00 PM

Remember, successful Hunter Ed completion is required if you plan to hunt anywhere in the United States.

To register - contact Lowell Bennett @ (309) 274-5586.

### IVC TRAP NEWS:

The IVC Trap Team will resume shooting on Sunday evenings from 6 to 9 PM starting September 26<sup>th</sup>. The team has grown beyond the original expectations with some of the youth advancing to higher tournaments. Additional adult assistance is welcome to help on these Sunday evenings.

### ANNUAL MEETING & ELECTIONS:

Remember Tuesday November 9<sup>th</sup> is the ANNUAL MEETING & ELECTION NIGHT.

All four Officers are up for election / re-election. To be an officer you must be an Associate Life or Life member and your term is one year.

Four Directors are also up for election / re-election. The term is two years. Two of the slots may be filled by Annual Members while the other two slots must be filled by Associate Life or Life Members.

Your club needs more members to become involved in becoming an Officer or a Director.

If you are interested in running for any of these slots please contact Keith Kohler @ (309) 202-4016, Jim Martin @ (309) 397-1777, or Steve Morris @ (309) 370-6623.

**OUTDOOR WORK PARTY:**

**SPECIAL OUTDOOR WORK PARTY:**

A SPECIAL OUTDOOR WORK PARTY TO BUILD NEW TARGET BASES IS SCHEDULED FOR AUGUST 23 - 28, 2021, 9 AM. NEED 4 - 6 WORKERS TO HELP BUILD FORMS, MIX THE CONCRETE, AND POUR THE BASES, THEN HELP REBUILD THE FORMS. CONCRETE EXPERIENCE IS A PLUS!! QUESTIONS - CONTACT STEVE SCHNECKENBURGER @ (309) 657-0170.

**GROUNDS:** Saturday, September 11, 8 AM - Work will include picking up/burning downed branches, cutting up downed trees, trimming around the lake, cleaning up berms, picking up rocks from berms, etc. Remember to bring chainsaws, weed-trimmers, pole-saws, trucks/trailers, gloves, etc. Be sure to dress appropriately. Questions - contact Mark Kelly @ (309) 369-7442.

**OUTDOOR RANGES:** Saturday, September 11, 8 AM - Work will include repairing & replacing target boards, target frames, etc. Remember to bring gloves & any appropriate tools you think might be useful. Be sure to dress appropriately. Questions - contact Steve Schneckenburger @ (309) 657-0170.

**CLUBHOUSE & INDOOR RANGE WORK PARTY:**

Scott Kirchner has retired from heading up the monthly Indoor Range cleanup. His replacement is Rick Kephart.

**INDOOR RANGE:** Saturday, September 11, 8 AM. Work will include cleaning the Range Floor, Shooting Stations, Storeroom & Gun Vault Floor, Furnace Filters, etc. The backstop may also need painting, if not already finished, and will not be able to be finished unless sufficient personnel are available. Questions - contact Rick Kephart @ (309) 712-1649.

**CLUBHOUSE:** Saturday, September 11, 8 AM. Work will include cleaning the Main Hall, Entrance Area, Restrooms, Windows, Kitchen, etc. Questions - contact Bob Bjerke @ (309) 692-1800.

**ASSOCIATE LIFE MEMBERSHIP:** The club currently has openings for Associate Life Memberships. Our bylaws allow for up to a maximum of 50 Associate Life Members and we are currently at just under 20, so we can add up to 30 more. Becoming an Associate Life Member is the first step toward becoming a Life Member. Associate Life Members may be elected by the Board from the ranks of the Annual Members in the club if they have been an Annual Member for at least 2 years. Becoming an Associate Life Member does require a commitment to the club. Since the bylaws require that the officers and more than half of the Board members serving at any time must come from the Associate Life and Life Members, we are looking for people who are committed to supporting the operations of the club. That is why the bylaws also specify that candidates for Associate Life Membership have demonstrated their desire to serve the club by involvement in the activities and

work of the club. We are looking for those who put in their time even beyond the required 10 work hours. We are looking for those who want to help the club succeed.

There is also the financial commitment. The cost to become an Associate Life Member is currently \$1000.00 (ten years of dues up front). Your paid dues for the current year in which you apply go toward that \$1000.00, so that leaves a balance of \$900.00, after your application is accepted by the Board. You don't have to pay it all at once. A payment plan can be agreed to between the applicant and the officers and Board. On becoming a fully paid Associate Life Member, you no longer pay dues each year, but you are still obligated to pay the land fund assessment and you will still have the requirement for a minimum of 10 work hours regardless of age. The work hours should not be an issue if you are the type of person we are looking for.

Annual members who want to be considered for Associate Life Membership shall submit a written application (different form than the normal membership application. The prospective applicant will need to attend a monthly Board Meeting to answer any questions from the Board before being voted on for acceptance. If you are interested, please contact me (Bob Griffith). I am currently serving as your membership chairman and will be happy to answer questions and help you through the process. You can e-mail me at griffrc@chillisportsmen.org or give me a call @ 309-208-3144.

#### **AFFILIATIONS**

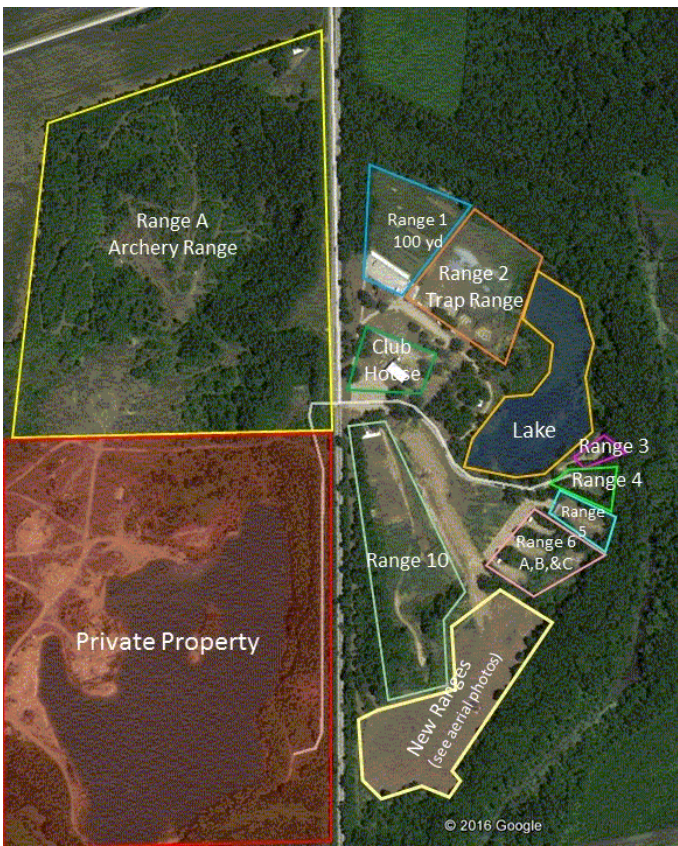
##### **Your club is affiliated with the following organizations:**

NRA	National Rifle Association	Affiliation Number #R0570
ISRA	Illinois State Rifle Association	Affiliation Number #00282
CMP	Civilian Marksmanship Program	Affiliation Number #5208
USPSA	United States Practical Shooting Association	Affiliation Number IL-08
SASS	Single Action Shooting Society	

#### **RANGE NUMBERS**

**The following are the range numbers:**

<u>RANGE</u>	<u>LOCATION</u>
1 --	100 Yard Range
2 --	Trap range
3 --	Short lakeside range (just north of Cowboy Town)
4 --	Cowboy Town
5 --	Practice Range
6 --	3 – bays (A, B, C)
7 --	New 100 yard range (Not useable yet)
8 --	6 – bays (A, B, C, D, E, F)
9 --	Reserved for future use
10 --	300 Yard Range (old range 7)
A --	Archery Range



## Chillicothe Sportsmen's Club Calendar of Activities

# September

<i>Sun</i>	<i>Mon</i>	<i>Tue</i>	<i>Wed</i>	<i>Thu</i>	<i>Fri</i>	<i>Sat</i>
			<b>1</b> 1-Sporting Rifle-11 AM 2—Open Trap—6 PM	<b>2</b>	<b>3</b>	<b>4</b>
<b>5</b> 2—Open Trap—9 AM 10—CF Buffalo—9 AM 5—MZL—R—10 AM	<b>6</b> <i><b>Labor Day</b></i> 1—CLOSED (EXCEPT FOR RIMFIRE TARGETS) FOR ATA MATCH 2—ATA MATCH--8 AM 1-Sporting Rifle—5 PM	<b>7</b> 1—WTSP—6 PM	<b>8</b> 1-Sporting Rifle-11 AM 2—Open Trap—6 PM	<b>9</b> 1-Outdr Bulls-eye-6 PM	<b>10</b>	<b>11</b> Outdr Work Party-8 AM Indr & CH Clean-8 AM 1-Mauser Match—9 AM
<b>12</b> 4,5—Cowboy—9 AM	<b>13</b> 1-Sporting Rifle—5 PM	<b>14</b> <i>Board Meeting 6:30 PM</i>	<b>15</b> 1-Sporting Rifle-11 AM 2—Open Trap—6 PM	<b>16</b>	<b>17</b>	<b>18</b> 1—HPR—8:30 AM 1—M-1 Garand-10 AM 5—Bowling Pin—9 AM 6a-6c—22 Steel—1 PM
<b>19</b> 2—Open Trap—9 AM 2—MZL-Shtgun-9 AM 1—RF Buffalo—9 AM 2—IVC Trap Pract—6 P Newsletter Article Sub Deadline—4 PM	<b>20</b> 1-Sporting Rifle—5 PM	<b>21</b> 1—WTSP—6 PM	<b>22</b> 1-Sporting Rifle-11 AM 2—Open Trap—6 PM	<b>23</b> 1-Outdr Bulls-eye-6 PM	<b>24</b> CH—Fall Gun Show Setup—9:30 AM	<b>25</b> CH—Fall Gun Show— 8:30 AM--4 PM 1—NRL 22—8 AM 3 thru 6c-USPSA-1 PM
<b>26</b> CH—Fall Gun Show— 8:30 AM—3 PM CH—Fall Gun Show Cleanup--3 PM 2—IVC Trap (1)—6 PM 3 thru 6c-USPSA-9 AM	<b>27</b> 1-Sporting Rifle—5 PM	<b>28</b> 1—WTSP—6 PM	<b>29</b> 1-Sporting Rifle-11 AM 2—Open Trap—6 PM	<b>30</b>		

Note that the number in front of the event indicates the range that the activity is taking place at.

Last Updated: 8/16/2021

# 2021

# Chillicothe Sportsmen's Club Calendar of Activities

## October

<i>Sun</i>	<i>Mon</i>	<i>Tue</i>	<i>Wed</i>	<i>Thu</i>	<i>Fri</i>	<i>Sat</i>
<b>31</b> <i>Halloween</i>					<b>1</b> Indr Pistol Pract—6 PM	<b>2</b> Indr-Small Bore—8 AM
<b>3</b> 2—Open Trap—9 AM 10—CF Buffalo—9 AM 5—MZL-Rifle—10 AM 10—NRL22—8 AM 2—IVC Trap (2)—6 PM	<b>4</b> Indr Small Bore--4 PM & 6 PM	<b>5</b> Indr Pistol Pract—1 PM Indr WTSP—6 PM	<b>6</b> Indr Small Bore-11 AM 2—Open Trap—6 PM Indr-Intro2B'eye-6 PM <b>CH-Hunter Ed Setup-- 7 PM</b>	<b>7</b> Indr Pistol Pract—1 PM Indr—MP-4H—5 PM  <b>CH-Hunter Ed--6 PM</b>	<b>8</b> <b>CH-Hunter Ed--6 PM</b>	<b>9</b> <b>CH-Hunter Ed--8 AM</b> Outdr Work Party-8 AM Indr & CH Clean-8 AM 1-Mauser Match—9 AM
<b>10</b> 4,5—Cowboy—9 AM 1—Mauser Match- Kings Shoot-10 AM 10—NRL22—8 AM 2—IVC Trap (3)—6 PM	<b>11</b> <u><i>Columbus Day</i></u> Indr Small Bore--4 PM & 6 PM	<b>12</b> <u><i>Board Meeting 6:30 PM</i></u>	<b>13</b> Indr Small Bore-11 AM 2—Open Trap—6 PM Indr-Intro2B'eye-6 PM	<b>14</b> Indr Pistol Pract—1 PM Indr Bulls-eye—6 PM	<b>15</b> Indr Pistol Pract—6 PM	<b>16</b> Indr-Small Bore—8 AM 1—HPR—1 PM 5—Bowling Pin—9 AM 6a-6c—22 Steel—1 PM
<b>17</b> <i>1—CLOSED (EXCEPT FOR RIMFIRE TARGETS) FOR ATA MATCH</i> 2—ATA MATCH--8 AM 1—RF Buffalo—9 AM 5—MZL-Rifle—10 AM 10—NRL22—8 AM 2—IVC Trap (4)—6 PM <b>Newsletter Article Sub Deadline—4 PM</b>	<b>18</b> Indr Small Bore--4 PM & 6 PM	<b>19</b> Indr Pistol Pract—1 PM Indr WTSP—6 PM	<b>20</b> Indr Small Bore-11 AM 2—Open Trap—6 PM Indr-Intro2B'eye-6 PM	<b>21</b> Indr Pistol Pract—1 PM Indr—MP-4H—5 PM	<b>22</b> Indr Pistol Pract—6 PM	<b>23</b> Indr-Small Bore—8 AM 10—NRL 22—8 AM 3 thru 6c-USPSA-1 PM
<b>24</b> 3 thru 6c-USPSA-9 AM 10—NRL22—8 AM 2—IVC Trap (5)—6 PM	<b>25</b> Indr Small Bore--4 PM & 6 PM	<b>26</b> Indr Pistol Pract—6 PM Indr WTSP—6 PM	<b>27</b> Indr Small Bore-11 AM 2—Open Trap—6 PM Indr-Intro2B'eye-6 PM	<b>28</b> Indr Pistol Pract—1 PM Indr Bulls-eye—6 PM	<b>29</b> Indr Pistol Pract—6 PM	<b>30</b> Indr-Small Bore—8 AM
<b>31</b>						

Note that the number in front of the event indicates the range that the activity is taking place at.

Last Updated: 8/16/2021

## 2021