

Chillicothe Sportsmen's Club August 2021 Newsletter

WEB PAGE <http://www.chillisportsmen.org/>

Chillicothe Sportsmen's Club, Inc.

PO Box 13, Chillicothe, IL. 61523-0013

Webmaster Tim Vik - webmaster@chillisportsmen.org

CONTACTS

If you have any questions or concerns about your Club you may contact any Club Officer listed below or any board member.

President	V-President	Secretary	Treasurer
Jeff Payne (309)264-2276	Steve Risinger (309)449-6268	Tim Vik (309)258-4809	Bob Griffith (309) 274-2068

INFORMATION & NOTICES:

SMALL BORE GALLERY

A RSO (Range safety Officer) is needed for the Saturday Morning event, 8 to 9 am, Indoor Range, beginning the first Saturday in October and running thru April 2022. For details contact Ross Baer @ (309) 657-2534 or at email baer36@gmail.com

TARGET FRAMES

Used Target Frames left on the ranges after events, shooting, will be treated as trash and thrown into the dumpster.

Additionally, Please mark your target frames with your event identification before putting them in the storage unit(s) so that other storage unit users will know who they belong to and trash them.

HUNTER EDUCATION CLASSES:

With the lifting of most of the covid-19 restrictions, Hunter Ed Classes are planned for August 12 - 14, & October 7 - 9. Times are -

Thursday, August 12, 6:00 PM to 9:30 PM
Friday, August 13, 6:00 PM to 9:30 PM
Saturday, August 14, 8:00 AM to 2:00 PM

Thursday, October 7, 6:00 PM to 9:30 PM
Friday, October 8, 6:00 PM to 9:30 PM
Saturday, October 9, 8:00 AM to 2:00 PM

Remember, successful Hunter Ed completion is required if you plan to hunt anywhere in the United States.

To register - contact Lowell Bennett @ (309) 274-5586.

MONTHLY WORK DATES:

Some concerns have been expressed about the monthly work days not being on the same weekend each month. If you look at the monthly calendar, you will probably see an event involving the clubhouse / indoor range on either the first or second weekend. The monthly work parties are therefore set for the weekend that precludes indoor conflicts whenever possible. See HUNTER ED on the second weekend of August & October.

OUTDOOR WORK PARTY:

Mark Molleck is seriously ill and hospitalized. He cannot have any visitors. The club needs someone to step up and at least temporarily replace him as Outdoor Range coordinator. Steve Schneckenberger is the temporary contact for the outdoor work parties.

GROUNDS: Saturday, August 7, 8 AM - Work will include picking up/burning trash, picking up/burning downed branches, etc. Remember to bring gloves & any appropriate tools, especially weed-trimmers, you think might be useful. Be sure to dress appropriately. Questions - contact Steve Schneckenberger @ (309) 657-0170.

A hydraulic ditch mower is needed to clean out the ditch in front of the Archery Range. If you have one or know where the club can borrow/use one please contact Steve Schneckenberger @ (309) 657-0170.

OUTDOOR RANGES: Saturday, August 7, 8 AM - Work will include repairing & replacing target boards, target frames, etc. Remember to bring gloves & any appropriate tools you think might be useful. Be sure to dress appropriately. Questions - contact Steve Schneckenberger @ (309) 657-0170.

CLUBHOUSE & INDOOR RANGE WORK PARTY:

INDOOR RANGE: Saturday, August 7, 8 AM. Work will include cleaning the Range Floor, Shooting Stations, Storeroom & Gun Vault Floor, Furnace Filters, etc. The backstop also needs painting and will not be able to be done unless sufficient personnel are available. Questions - contact Scott Kirchner @ (309) 256-3881.

CLUBHOUSE: Saturday, August 7, 8 AM. Work will include cleaning the Main Hall, Entrance Area, Restrooms, Windows, Kitchen, etc. Questions - contact Bob Bjerke @ (309) 692-1800.

ASSOCIATE LIFE MEMBERSHIP: The club currently has openings for Associate Life Memberships. Our bylaws allow for up to a maximum of 50 Associate Life Members and we are currently at just under 20, so we can add up to 30 more. Becoming an Associate Life Member is the first step toward becoming a Life Member. Associate Life Members may be elected by the Board from the ranks of the Annual Members in the club if they have been an Annual Member for at least 2 years.

Becoming an Associate Life Member does require a commitment to the club. Since the bylaws require that the officers and at least half of the Board members serving at any time must come from the Associate Life and Life Members, we are looking for people who are committed to supporting the operations of the club. That is why the bylaws also

specify that candidates for Associate Life Membership have demonstrated their desire to serve the club by involvement in the activities and work of the club. We are looking for those who put in their time even beyond the required 10 work hours. We are looking for those who want to help the club succeed.

There is also the financial commitment. The cost to become an Associate Life Member is currently \$1000.00 (ten years of dues up front). Your paid dues for the current year in which you apply go toward that \$1000.00, so that leaves a balance of \$900.00, after your application is accepted by the Board. You don't have to pay it all at once. A payment plan can be agreed to between the applicant and the officers and Board. On becoming a fully paid Associate Life Member, you no longer pay dues each year, but you are still obligated to pay the land fund assessment and you will still have the requirement for a minimum of 10 work hours regardless of age. The work hours should not be an issue if you are the type of person we are looking for.

Annual members who want to be considered for Associate Life Membership shall submit a written application (different form than the normal membership application. The prospective applicant will need to attend a monthly Board Meeting to answer any questions from the Board before being voted on for acceptance. If you are interested, please contact me (Bob Griffith). I am currently serving as your membership chairman and will be happy to answer questions and help you through the process. You can e-mail me at griffrc@chillissportsmen.org or give me a call @ 309-208-3144.

AFFILIATIONS

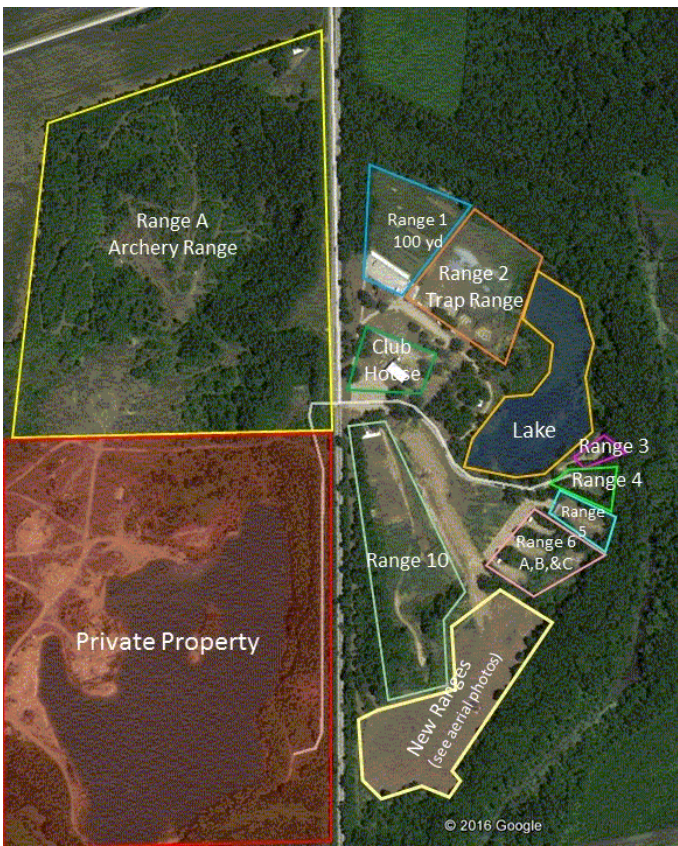
Your club is affiliated with the following organizations:

NRA	National Rifle Association	Affiliation Number #R0570
ISRA	Illinois State Rifle Association	Affiliation Number #00282
CMP	Civilian Marksmanship Program	Affiliation Number #5208
USPSA	United States Practical Shooting Association	Affiliation Number IL-08
SASS	Single Action Shooting Society	

RANGE NUMBERS

The following are the range numbers:

<u>RANGE</u>	<u>LOCATION</u>
1 --	100 Yard Range
2 --	Trap range
3 --	Short lakeside range (just north of Cowboy Town)
4 --	Cowboy Town
5 --	Practice Range
6 --	3 – bays (A, B, C)
7 --	New 100 yard range (Not useable yet)
8 --	6 – bays (A, B, C, D, E, F)
9 --	Reserved for future use
10 --	300 Yard Range (old range 7)
A --	Archery Range



Range 7 UPDATE.

Here are the latest pictures!





Model of Range 7.

Chillicothe Sportsmen's Club Calendar of Activities

August

<i>Sun</i>	<i>Mon</i>	<i>Tue</i>	<i>Wed</i>	<i>Thu</i>	<i>Fri</i>	<i>Sat</i>
1 2—Open Trap—9 AM 10—CF Buffalo—9 AM 5—MZL-Rifle--10 AM	2 1-Sporting Rifle—5 PM	3 1—WTSP—6 PM	4 1-Sporting Rifle-11 AM 2---Open Trap—5 PM 2-Trap League (18)-6 P	5	6	7 Outdr Work Party-8 AM Indr & CH Clean-8 AM
8 4,5—Cowboy—9 AM	9 1-Sporting Rifle—5 PM	10 <u>Board Meeting 6:30 PM</u>	11 1-Sporting Rifle-11 AM 2---Open Trap—5 PM 2-Trap League (19)-6 P CH-Hunter Ed Setup-- 7 PM	12 1-Outdr Bulls-eye-6 PM CH-Hunter Ed--6 PM	13 CH-Hunter Ed--6 PM	14 CH-Hunter Ed--8 AM 1-Mauser Match—9 AM 3 thru 6c-USPSA-9 AM
15 2—Open Trap—9 AM 1—RF Buffalo—9 AM 3 thru 6c-USPSA-9 AM 5—MZL—R—10 AM Newsletter Article Sub Deadline—4 PM	16 <i>CH-LEO Armorer Tng</i> 1-Sporting Rifle—5 PM	17 <i>CH-LEO Armorer Tng</i> 1—WTSP—6 PM	18 <i>CH-LEO Armorer Tng</i> 1-Sporting Rifle-11 AM 2---Open Trap—5 PM 2-Trap League (20)-6 P	19 <i>10_LEO Armorer Tng</i>	20	21 1—HPR—8:30 AM 5—Bowling Pin—9 AM 6a-6c—22 Steel—1 PM
22	23 1-Sporting Rifle—5 PM	24 1—WTSP—6 PM	25 1-Sporting Rifle-11 AM Trap League Banquet— 6 PM	26 1-Outdr Bulls-eye-6 PM	27	28 10—NRL 22—8 AM
29	30 1-Sporting Rifle—5 PM	31 1—WTSP—6 PM				

Note that the number in front of the event indicates the range that the activity is taking place at.

Last Updated: 7/26/2021

2021

Chillicothe Sportsmen's Club Calendar of Activities

September

<i>Sun</i>	<i>Mon</i>	<i>Tue</i>	<i>Wed</i>	<i>Thu</i>	<i>Fri</i>	<i>Sat</i>
			1 1-Sporting Rifle-11 AM 2—Open Trap—6 PM	2	3	4
5 2—Open Trap—9 AM 10—CF Buffalo—9 AM 5—MZL—R—10 AM	6 <i>Labor Day</i> 1—CLOSED (EXCEPT FOR RIFMIRE TARGETS) FOR ATA MATCH 2—ATA MATCH--8 AM 1-Sporting Rifle—5 PM	7 1—WTSP—6 PM	8 1-Sporting Rifle-11 AM 2—Open Trap—6 PM	9 1-Outdr Bulls-eye-6 PM	10	11 Outdr Work Party-8 AM Indr & CH Clean-8 AM 1-Mauser Match—9 AM
12 4,5—Cowboy—9 AM	13 1-Sporting Rifle—5 PM	14 <i>Board Meeting 6:30 PM</i>	15 1-Sporting Rifle-11 AM 2—Open Trap—6 PM	16	17	18 1—HPR—8:30 AM 1—M-1 Garand-10 AM 5—Bowling Pin—9 AM 6a-6c—22 Steel—1 PM
19 2—Open Trap—9 AM 2—MZL-Shtgun-9 AM 1—RF Buffalo—9 AM Newsletter Article Sub Deadline—4 PM	20 1-Sporting Rifle—5 PM	21 1—WTSP—6 PM	22 1-Sporting Rifle-11 AM 2—Open Trap—6 PM	23 1-Outdr Bulls-eye-6 PM	24 CH—Fall Gun Show Setup—9:30 AM	25 CH—Fall Gun Show— 8:30 AM--4 PM 1—NRL 22—8 AM 3 thru 6c-USPSA-1 PM
26 CH—Fall Gun Show— 8:30 AM—3 PM CH—Fall Gun Show Cleanup--3 PM 3 thru 6c-USPSA-9 AM	27 1-Sporting Rifle—5 PM	28 1—WTSP—6 PM	29 1-Sporting Rifle-11 AM 2—Open Trap—6 PM	30		

Note that the number in front of the event indicates the range that the activity is taking place at.

Last Updated: 7/26/2021

2021