

# **Chillicothe Sportsmen's Club Newsletter August 2020**

**WEB PAGE** <http://www.chillisportsmen.org/>

**Chillicothe Sportsmen's Club, Inc.**

**PO Box 13, Chillicothe, IL. 61523-0013**

**Webmaster Tim Vik - [webmaster@chillisportsmen.org](mailto:webmaster@chillisportsmen.org)**

## **CONTACTS**

If you have any questions or concerns about your Club you may contact any Club Officer listed below or any board member.

<b>President</b>	<b>V-President</b>	<b>Secretary</b>	<b>Treasurer</b>
Jeff Payne (309)264-2276	Steve Risinger (309)449-6268	Tim Vik (309)258-4809	Bob Griffith (309) 274-2068

---

## **INFORMATION & NOTICES:**

### **COVID-19 REMINDERS:**

- Remember to stay safe when at the Club - at a safe distance (6 feet or more) and in a safe manner (personal protective equipment)!
- We still have to keep our group size to 50 people maximum or 50% capacity or less when indoors.
- Be sure to wear a face mask/covering when not physically shooting.
- Keep in mind that your decision to come to the Club and shoot is your free choice!
- IF YOU ARE A HIGH RISK INDIVIDUAL THAT MAY BE SUSCEPTIBLE TO THE covid-19 VIRUS, MAYBE YOU SHOULD STAY HOME UNTIL THIS THING FINALLY DIMINISHES.
- We want you to be safe and that includes keeping your health in mind when making these decisions.
- BE SAFE!

### **RESTROOMS:**

The Range House Restrooms are open & usable. They have to be kept clean. They will be cleaned weekly, however they may need to be cleaned more often depending upon usage. Cleaning materials are located below the sinks. Use them as necessary. THANKS!

The same applies to the Clubhouse Restrooms. They should see minimal usage as the Indoor Range / Clubhouse are not open until October. There is also a porta-jon (Cleaned weekly) located on Range #5.

### **OUTDOOR WORK PARTY:**

**GROUNDS & RANGES:** Saturday, August 1, 8 AM - Work will include picking up/burning trash, picking up/burning downed branches, etc. Remember to bring gloves & any appropriate tools you think might be useful.

Saturday, August 1, 8 AM - Work will include repairing & replacing target boards, target frames, etc. Remember to bring gloves & any appropriate tools you think might be useful.

Questions - contact Mark Molleck @ (309) 273-9180.

### **CLUBHOUSE & INDOOR RANGE WORK PARTY:**

**INDOOR RANGE:** Saturday, August 1, 8 AM - Work will include cleaning the Range Floor, Shooting Stations, Storeroom & Gun Vault Floors, Furnace Filters, etc. Questions - contact Scott Kirchner @ (309) 256-3881.

**CLUBHOUSE:** Saturday, August 1, 8 AM. Work will include cleaning the Main Hall, Entrance Area, Restrooms, Windows, Kitchen, AC Units, etc. Questions - contact Bob Bjerke @ (309) 692-1800.

### **EVENTS:**

**Trap League** restarted July 1 and will continue thru September 2! There will be no prizes and no end of league banquet this year due to the shortened up league.

**Introduction to Defensive Handgun** Will be held on Sunday, August 16, Range #6C, 8 a.m. Questions - contact Steve Schnurbusch, [steve\\_schnurbusch@hotmail.com](mailto:steve_schnurbusch@hotmail.com)

**Hunter Ed for August** has been cancelled due to the lack of participants.

**September Gun Show** is tentatively planned for the final weekend of the month. Everything depends on the State & Peoria County Health Department. The kitchen availability is unknown at this time. More details should be known in time for the September newsletter.

## **AFFILIATIONS**

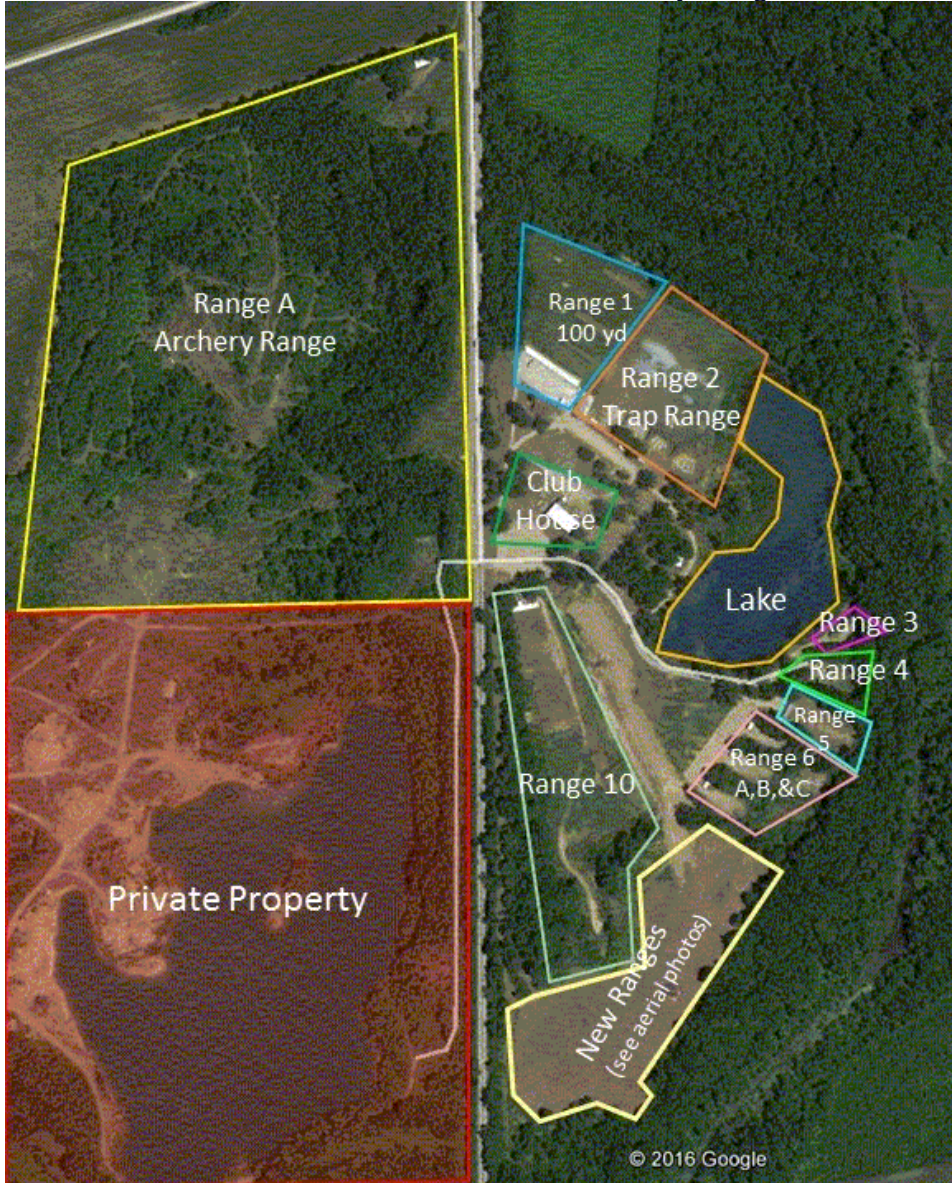
### **Your club is affiliated with the following organizations:**

NRA	National Rifle Association	Affiliation Number #R0570
ISRA	Illinois State Rifle Association	Affiliation Number #00282
CMP	Civilian Marksmanship Program	Affiliation Number #5208
USPSA	United States Practical Shooting Association	Affiliation Number IL-08
SASS	Single Action Shooting Society	

## RANGE NUMBERS

The following are the range numbers:

<u>RANGE</u>	<u>LOCATION</u>
1 --	100 Yard Range
2 --	Trap range
3 --	Short lakeside range (just north of Cowboy Town)
4 --	Cowboy Town
5 --	Practice Range
6 --	3 – bays (A, B, C)
7 --	New 100 yard range (Not useable yet)
8 --	6 – bays (A, B, C, D, E, F)
9 --	Reserved for future use
10 --	300 Yard Range (old range 7)
A --	Archery Range







# Chillicothe Sportsmen's Club Calendar of Activities

## August

<i>Sun</i>	<i>Mon</i>	<i>Tue</i>	<i>Wed</i>	<i>Thu</i>	<i>Fri</i>	<i>Sat</i>
						<b>1</b> Outdr Work Party-8 AM Indr & CH Clean-8AM
<b>2</b> 2—Open Trap—9 AM 10—CF Buffalo—9 AM 2—MZL-Shtgun-10 AM	<b>3</b> 5— <i>PHPD</i> —8 AM 1—Sporting Rifle-5 PM	<b>4</b> 1—WTSP—6 PM	<b>5</b> 1-Sporting Rifle-11 AM 2—Open Trap—5 PM 2-Trap League (6)-6 P	<b>6</b> 2—Open Trap—6 PM	<b>7</b>	<b>8</b> 1-Mauser Match—9 AM
<b>9</b> 4,5—Cowboy—9 AM	<b>10</b> 1—Sporting Rifle-5 PM	<b>11</b> Board Meeting 6:30PM	<b>12</b> 1-Sporting Rifle-11 AM 2—Open Trap—5 PM 2-Trap League (7)-6 P	<b>13</b> 1-Outdr Bulls-eye-6 PM	<b>14</b>	<b>15</b> Arch-3D Match—8-AM 1—HPR—8:30 AM 5—Bowling Pin—9 AM 6a-6c—22 Steel—1 PM
<b>16</b> Arch-3D Match—8-AM 6C--Defensive Handgun—8 AM 2—Open Trap—9 AM 10—RF Buffalo—9 AM 5—MZL-Rifle—10 AM  Newsletter Article Sub Deadline—5 PM	<b>17</b> 1—Sporting Rifle-5 PM	<b>18</b> 1—WTSP—6 PM	<b>19</b> 1-Sporting Rifle-11 AM 2—Open Trap—5 PM 2-TrapLeague (8)-6-P	<b>20</b> 2—Open Trap—6 PM	<b>21</b> <i>CH</i> —WITO SETUP <i>Indr</i> —WITO Pistol-PM	<b>22</b> <i>WITO</i> —All Lower Ranges—All Day
<b>23</b> 3 thru 6c-USPSA-9 AM	<b>24</b> 1—Sporting Rifle-5 PM	<b>25</b> 1—WTSP—6 PM	<b>26</b> 1-Sporting Rifle-11 AM 2—Open Trap—5 PM 2-TrapLeague (9)-6-P	<b>27</b> 1-Outdr Bulls-eye-6 PM	<b>28</b>	<b>29</b>
<b>30</b>	<b>31</b> 1—Sporting Rifle-5 PM					

# 2020

Note that the number in front of the event indicates the range that the activity is taking place at.

Last Updated: 8/1/2020

## Chillicothe Sportsmen's Club Calendar of Activities

# September

<i>Sun</i>	<i>Mon</i>	<i>Tue</i>	<i>Wed</i>	<i>Thu</i>	<i>Fri</i>	<i>Sat</i>
		<b>1</b> 1—WTSP—6 PM	<b>2</b> 1-Sporting Rifle-11 AM 2—Open Trap—5 PM 2-TrapLeague (10)-6-P	<b>3</b>	<b>4</b>	<b>5</b> Outdr Work Party-8 AM Indr & CH Clean-8AM
<b>6</b> 2—Open Trap—9 AM 10—CF Buffalo—9 AM 5—MZL-Rifle—10 AM	<b>7</b> <u>Labor Day</u> <i>1—CLOSED (EXCEPT FOR RIMFIRE TARGETS) FOR ATA MATCH</i> <i>2—ATA MATCH—8 AM</i>	<b>8</b> <i>Board Meeting 6:30PM</i>	<b>9</b> 1-Sporting Rifle-11 AM 2—Open Trap—6 PM	<b>10</b> 1-Outdr Bulls-eye-6 PM	<b>11</b>	<b>12</b> 1-Mauser Match—9 AM
<b>13</b> 4,5—Cowboy—9 AM  <b>Newsletter Article Sub Deadline—5 PM</b>	<b>14</b> 1—Sporting Rifle-5 PM	<b>15</b> 1—WTSP—6 PM	<b>16</b> 1-Sporting Rifle-11 AM 2—Open Trap—6 PM	<b>17</b>	<b>18</b>	<b>19</b> <i>CH—BPC-WO—8 AM</i> <i>1—HPR—8:30 AM</i> <i>1—M-1 Garand-10 AM</i> <i>3 thru 6c-USPSA-1 PM</i>
<b>20</b> 2—Open Trap—9 AM- 2—MZL Shotgun-9 AM 3 thru 6c-USPSA-9 AM 10—RF Buffalo—9 AM	<b>21</b> 1—Sporting Rifle-5 PM	<b>22</b> 1—WTSP—6 PM	<b>23</b> 1-Sporting Rifle-11 AM 2—Open Trap—6 PM	<b>24</b> 1-Outdr Bulls-eye-6 PM	<b>25</b> <i>CH—Fall Gun Show Setup—9:30 AM</i>	<b>26</b> <i>6B-USPSA Class—8 AM</i> <i>CH—Fall Gun Show—8:30 AM—4 PM</i>
<b>27</b> <i>6B-USPSA Class—8 AM</i> <i>CH—Fall Gun Show—8:30 AM—3 PM</i> <i>Gun Show Cleanup-3 P</i>	<b>28</b> <i>5—PHPD—8 AM</i> 1—Sporting Rifle-5 PM	<b>29</b> 1—WTSP—6 PM	<b>30</b> 1-Sporting Rifle-11 AM 2—Open Trap—6 PM			

# 2020

Note that the number in front of the event indicates the range that the activity is taking place at.

Last Updated: 8/1/2020