

# **Chillicothe Sportsmen's Club Newsletter August 2019**

**WEB PAGE** <http://www.chillisportsmen.org/>

**Chillicothe Sportsmen's Club, Inc.**

**PO Box 13, Chillicothe, IL. 61523-0013**

**Webmaster Tim Vik - [webmaster@chillisportsmen.org](mailto:webmaster@chillisportsmen.org)**

## **CONTACTS**

If you have any questions or concerns about your Club you may contact any Club Officer listed below or any board member.

| <b>President</b>            | <b>V-President</b>              | <b>Secretary</b>         | <b>Treasurer</b>                 |
|-----------------------------|---------------------------------|--------------------------|----------------------------------|
| Jeff Payne<br>(309)264-2276 | Steve Risinger<br>(309)449-6268 | Tim Vik<br>(309)258-4809 | Lowell Bennett<br>(309) 274-5586 |

---

## **INFORMATION & NOTICES:**

### **CLUB NEEDS:**

Our Club needs Director's or Co-Directors' for Tuesday Afternoon Pistol Practice, Archery, & The Well-Armed Woman activities if you want these events to continue being offered. Contact any Board Member if you are interested in taking on the responsibility for any of these activities.

### **RANGE MAINTENANCE: SHOOTER'S PLEASE -**

- Remove your used targets from the backer-boards. If they are left on the backer-boards, they come loose and blow all over the grounds.
- Place your used targets in the shooting site burn barrel or in the dumpster by the 4-stall garage.
- Pick up any other trash and place in burn barrel or the dumpster.
- **Thank you**

### **HUNTER EDUCATION COURSE:**

An important way of passing on the American Hunting Tradition and Gun Ownership Rights

Anyone born on or after January 1, 1980 must take a hunter education course in order to obtain/purchase their first "Real (Adult)" hunting license in Illinois. This class is required in all 50 states, with the age varying from state to state, with Colorado being January 1, 1949, so maybe you adults need it also.

The thirteen hour course, which is FREE, will be held over three days at the Chillicothe Sportsmen's Club, meeting from 6:00 - 9:30 PM on Thursday, August 8, 6:00 - 9:30 PM on Friday, August 9, and 8:00 AM - 2:00 PM on Saturday, August 10.

The next scheduled class is October 10, 11, & 12, 2019.

For more information about the course, and to reserve a seat, since space is limited, contact the coordinating instructor, Lowell Bennett, at (309) 274-5586.

### **HELLO SHOOTERS:**

The following information pertains to the Chillicothe multi-gun action shooting program. Please dress accordingly and bring water to stay hydrated. We supply water on the stages, but that may not be enough so please bring some for yourself. Match sign-up goes from 08:00 - 8:45. New shooter safety check is from 8:15 - 8:45. New shooters and 1st time multi-gunners must be ready to demonstrate your safe gun handling skills and know the match rules and range commands. The new shooter orientation guide is found on our Chilli Multi-gun Facebook page. Look under the files link on the left hand side when viewing on your computer or the files button on the FB app. First shot rings out at 09:00.

Range safety is everyone's responsibility. We are using the 2019 USPSA Multi-gun rules this year. There's a copy of the USPSA Multi-gun rules on our Facebook page under files. A copy can also be found by using this link below or from the USPSA web site.

Our final match of the 2019 multi-gun season is September 29th. We shoot in any weather unless there's lightning  
[https://uspsa.org/viewer/2019 USPSA Rifle Shotgun Multigun Rulebook.pdf](https://uspsa.org/viewer/2019_USPSA_Rifle_Shotgun_Multigun_Rulebook.pdf)

Everybody is a Range Officer when it comes to an unsafe act. The designated RO's can't watch everything. If you see something unsafe, speak up.

When you show up to the range if you have a cart for your equipment and firearms and in accordance with rule 10.5.4.3 you may put your long guns into your cart from your vehicle ONLY if you have a chamber flag inserted in the ejection port already. To help speed things up on the morning of the match install your chamber flags in the long guns the night before, so they can go DIRECTLY onto your cart from your bag/case. Be conscious of everybody around you, and do not flag anybody with your muzzle. Un-bag your pistols ONLY at the designated safe tables. Remember you cannot handle any ammo in the safe areas as referenced in rule 10.5.11. Please use the time before your squad shoots a stage, to load your magazines, and develop your stage plan. Before your squad starts a stage, your RO will let you know when everybody can pre-load your shotgun tubes against the berm. (Tubes only, no shells in the chamber.) Remember you can only remove your long guns from a bag/case or cart with the muzzle pointed into the side berm in accordance with rule 10.5.20.

All squad members must help reset the stages after the RO announces the stage is clear, except for the "On Deck" shooter and the shooter that just finished shooting the stage. This is a group participation sport and pasting targets and resetting stage props keeps the match on time.

When you are "On Deck" you may use this time to do your final walk through of the stage, but don't slow down the stage reset process.

The "On Deck" shooter should have everything ready to go when the RO calls them. The on "Deck Shooter "must comply with USPSA Multi-gun rule 10.5.20 when removing your long gun from a bag/case or conveyance as staged above by pointing the muzzle into the side berm before removing from a bag/case or cart. As your squad walks back from resetting the stage, you should have your long guns in hand, muzzle up and wait for the RO to make you ready. Your RO will instruct you when to load and make ready for each firearm.

When you finish your stage, you should keep your long guns pointed muzzle up with chamber flag inserted as you prepare to return them to their bag/case or cart. As you put your long guns into your bag/case or cart, remain conscious of everybody around you and do not flag them with your muzzle. An easy way of doing this is to have your bag/case or cart pointed towards the side berm, and point the muzzle down against the berm onto your bag/case or cart in accordance with rule 10.5.20. After you put your long guns away, reload your mags while the next shooter completes the stage and then help with resetting the stage.

We want our match to move along smoothly so we can get everybody home at a decent time. To do this, we need everybody's help pasting targets and resetting the stages. Also, please help after the match with teardown/cleanup and putting props away in the garage. The awards and prize table presentation start after everything is cleaned up and put away. It was brought to the attention of the Chillicothe Sportsmen's Club board of directors that after our last match in June trash remained in the bays. This is unacceptable. Even though it was hot & humid with temperature indexes in the 100s everyone must ensure all trash is placed in the trash burn barrels. For the September match we will supply additional trash bags on each stage to supplement any overflow that cannot be accommodated by the trash burn barrels.

When your squad is done shooting the last stage of the match, it is everybody's responsibility to help tear down his or her stage and police up the stage. Your RO will tell you what to do with the props for each stage. Everything goes on trailers and then transported to the garage. Please help at the garage with unloading the trailers and arranging the props in the garage and discarding trash. The awards and prize table presentation start after the trash in all bays has been policed up and props are put away, so help out other squads by cleaning up and putting stuff away and that way we can all get home a little earlier.

## **NRL 22:**

The Chillicothe Sportsman's Club is gauging interest in a new rimfire rifle match format.

The NRL (National Rifle League) which is a centerfire long range practical rifle series has started the NRL22 match series.

The is a fast paced, positional match format. Shooters typically will have a two minute time limit per stage to fire ten rounds from varying positions at yardages ranging from 25-100 yards. Some venues may have "bonus stages" and longer ranges.

Every club shoots the same course of fire across the country at once a month matches. Shooters scores are entered nationally and the top shooters qualify for a regional match and may qualify for an annual national match.

This sport is intended to be family friendly as well as new shooter friendly.

Separate classes are available at each match and include Open, Base, Ladies, and young guns.

Open class is any rimfire and any optic.

Base class is any rimfire and optic with a combined MSRP of \$1000 or less.

Young guns are shooters under 18 and ladies should be self explanatory. We are also very much able to assist and shooter who may have a handicap. We can make modification which allow handicap shooters to complete the "intent" of the stage and still be competitive.

Thinking to start with few evenings of "mini-matches/train-up" format where shooters can get used to the format and the jump in to full Saturday matches in the near future if interest is there.

Please visit the NRL22 website,

<https://nrl22.org/> for more on the organization. You will find rules, match results, and each month's course of fire on the website.

There are several match videos on YouTube if you simply enter NRL22 matches in the search bar.

It is very important if you have interest in these matches, to respond to Kriss Edwards ([kedwards@menoldinc.com](mailto:kedwards@menoldinc.com)) or 309-208-2110 so we can decide the viability of this endeavor.

Match participants need not be club members.

Kriss Edwards

### **OUTDOOR WORK PARTY:**

Saturday, August 3, 8 AM. We will be cleaning up from the recent floods, replacing target boards, etc. Bring appropriate tools, rakes, shovels, gloves & any other tools you think might be useful. Summer is starting so we will need string trimmers, etc. You can always check with me to see if the weather appears to be cooperating. Contact Tim Shoff @ (309) 657-4439.

### **CLUBHOUSE & INDOOR RANGE CLEANUP:**

**CLUBHOUSE CLEANUP:** Saturday, August 3, 8 AM. Work will include cleaning the Main Hall, Entrance Area, Restrooms, Windows, Kitchen, etc. Questions - contact Bob Bjerke @ (309) 692-1800.

**INDOOR RANGE CLEANUP:** Saturday, August 3, 8 AM. Work will include cleaning the Floor, Shooting Stations, Storeroom & Gun Vault Floor, Furnace Filters, etc. Questions - contact Scott Kirchner @ (309) 256-3881.

## AFFILIATIONS

### Your club is affiliated with the following organizations:

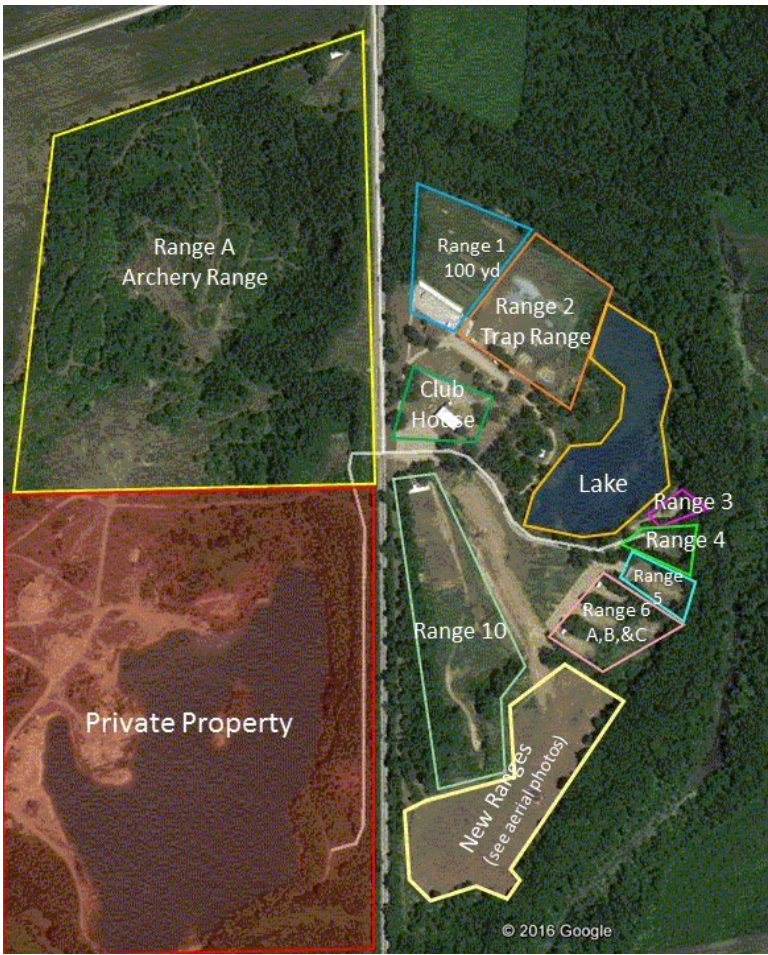
NRA National Rifle Association Affiliation Number #R0570  
ISRA Illinois State Rifle Association Affiliation Number #00282  
CMP Civilian Marksmanship Program Affiliation Number #5208  
USPSA United States Practical Shooting Association Affiliation Number  
IL-08  
SASS Single Action Shooting Society

## RANGE NUMBERS

The following are the range numbers:

| <u>RANGE</u> | <u>LOCATION</u>                                  |
|--------------|--|
| 1 --         | 100 Yard Range                                   |
| 2 --         | Trap range                                       |
| 3 --         | Short lakeside range (just north of Cowboy Town) |
| 4 --         | Cowboy Town                                      |
| 5 --         | Practice Range                                   |
| 6 --         | 3 – bays (A, B, C)                               |
| 7 --         | New 100 yard range (Not useable yet)             |
| 8 --         | 6 – bays (A, B, C, D, E, F)                      |
| 9 --         | Reserved for future use                          |
| 10 --        | 300 Yard Range (old range 7)                     |
| A --         | Archery Range                                    |





# Chillicothe Sportsmen's Club Calendar of Activities

## August

| <i>Sun</i>   | <i>Mon</i>  | <i>Tue</i>                               | <i>Wed</i>   | <i>Thu</i>  | <i>Fri</i>  | <i>Sat</i>   |
|--|---|--|--|---|---|--|
|  |   |  |  | <b>1</b><br>2—Open Trap—6 PM                                | <b>2</b>  | <b>3</b><br>Outdr Work Party-8 AM<br>Indr & CH Clean-8 AM<br>5—USRA (Carbine I)—<br>7 AM   |
| <b>4</b><br>2—Open Trap—9 AM<br>10—CF Buffalo—9 AM<br>2—MZL-Shtgun-10 AM   | <b>5</b><br>1-Sporting Rifle-5 PM   | <b>6</b><br>1—WTSP—6 PM                  | <b>7</b><br>1-Sporting Rifle-11 AM<br><i>CH-Hunt Ed Setup-7 PM</i><br>2—Open Trap—5 PM<br>League (19)—6 PM | <b>8</b><br><i>CH-Hunt Ed-5 PM</i><br>1-Outdr Bullseye-6 PM | <b>9</b><br><i>CH-Hunt Ed-5 PM</i>                              | <b>10</b><br><i>CH-Hunt Ed-8 AM</i><br>1-Mauser Match—9 AM                                 |
| <b>11</b><br>4,5—Cowboy—9 AM   | <b>12</b><br>1-Sporting Rifle-5 PM<br>CH-Planning Committee Meeting—6:30 PM | <b>13</b><br><i>Board Meeting 6:30PM</i> | <b>14</b><br>1-Sporting Rifle-11 AM<br>2—Open Trap—5 PM<br>League (20)—6 PM                                | <b>15</b><br>2—Open Trap—6 PM                               | <b>16</b>   | <b>17</b><br>Archery 3D—7 AM<br>1—HPR—7:30 AM<br>5—Bowling Pin—9 AM<br>6a-6c—22 Steel—1 PM |
| <b>18</b><br>Archery 3D—7 AM<br>2—Open Trap—9 AM<br>10—RF Buffalo—9 AM<br>5—MZL-Rifle-10 AM<br><br>Newsletter Article Sub<br>Deadline—5 PM | <b>19</b><br>1-Sporting Rifle-5 PM  | <b>20</b><br>1—WTSP—6 PM                 | <b>21</b><br>1-Sporting Rifle-11 AM  | <b>22</b><br>1-Outdr Bullseye-6 PM                          | <b>23</b><br><i>CH—WITO SETUP</i><br><i>Indr-WITO Pistol-PM</i> | <b>24</b><br><i>WITO—All Day—All Ranges</i>  |
| <b>25</b><br>3 thru 6c-USPSA-9 AM  | <b>26</b><br>1-Sporting Rifle-5 PM  | <b>27</b><br>1—WTSP—6 PM                 | <b>28</b><br>1-Sporting Rifle-11 AM<br>CH—Trap League<br>Banquet—6 PM                                      | <b>29</b>   | <b>30</b>   | <b>31</b>  |

## 2019

Note that the number in front of the event indicates the range that the activity is taking place at.

Last Updated: 7/21/2019

## Chillicothe Sportsmen's Club Calendar of Activities

# September

| <i>Sun</i>   | <i>Mon</i>   | <i>Tue</i>                               | <i>Wed</i>  | <i>Thu</i>                         | <i>Fri</i>  | <i>Sat</i>   |
|--|--|--|---|------------------------------------|---|--|
| <b>1</b><br>2—Open Trap—9 AM<br>10—CF Buffalo—9 AM<br>5—MZL-Rifle-10 AM  | <b>2</b><br><u><i>Labor Day</i></u><br>1-Sporting Rifle-5 PM               | <b>3</b><br>1—WTSP—6 PM                  | <b>4</b><br>1-Sporting Rifle-11 AM<br>2—Open Trap—6 PM                  | <b>5</b>                           | <b>6</b>  | <b>7</b><br>Outdr Work Party-8 AM<br>Indr & CH Clean-8 AM  |
| <b>8</b><br>4,5—Cowboy—9 AM  | <b>9</b><br>1-Sporting Rifle-5 PM<br>CH-Planning Committee Meeting—6:30 PM | <b>10</b><br><i>Board Meeting 6:30PM</i> | <b>11</b><br>1-Sporting Rifle-11 AM<br>2—Open Trap—6 PM                 | <b>12</b><br>1-Outdr Bullseye-6 PM | <b>13</b>   | <b>14</b><br>1-Mauser Match—9 AM   |
| <b>15</b><br><i>1—CLOSED (EXCEPT FOR RIMFIRE TARGETS) FOR ATA MATCH</i><br>2—ATA MATCH—8 AM<br>10—RF Buffalo—9 AM<br>5—MZL-Rifle-10 AM<br><br>Newsletter Article Sub Deadline—5 PM | <b>16</b><br>1-Sporting Rifle-5 PM   | <b>17</b><br>5—PHPD—8 AM<br>1—WTSP—6 PM  | <b>18</b><br>1-Sporting Rifle-11 AM<br>5—PHPD—11 AM<br>2—Open Trap—6 PM | <b>19</b>                          | <b>20</b><br>5—PHPD—11 AM                           | <b>21</b><br>Archery 3D—7 AM<br>1—HPR—7:30 AM<br>1—M-1 Garand-10 AM<br>5—Bowling Pin—9 AM<br>6a-6c—22 Steel—1 PM |
| <b>22</b><br>Archery 3D—7 AM<br>5—USRA (Carbine II)—7 AM   | <b>23</b><br>1-Sporting Rifle-5 PM   | <b>24</b><br>1—WTSP—6 PM                 | <b>25</b><br>1-Sporting Rifle-11 AM<br>2—Open Trap—6 PM                 | <b>26</b><br>1-Outdr Bullseye-6 PM | <b>27</b><br><i>CH--Fall Gun Show Setup—9:30 AM</i> | <b>28</b><br><i>CH--Fall Gun Show—8:30 AM—4 PM</i><br>3 thru 6C-USPSA-1 PM                                       |
| <b>29</b><br><i>CH--Fall Gun Show—8:30 AM—3 PM</i><br><i>Gun Show Cleanup-3 P</i><br><i>3 thru 6c &amp; 10—3 Gun Match—8 AM</i>  | <b>30</b><br>1-Sporting Rifle-5 PM   |  |   |                                    |   |  |

# 2019

Note that the number in front of the event indicates the range that the activity is taking place at.

Last Updated: 7/21/2019